

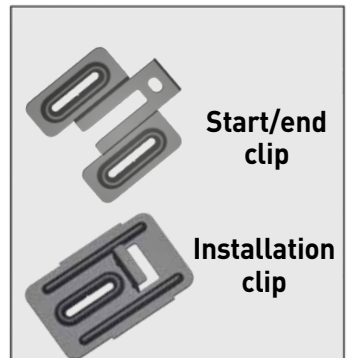
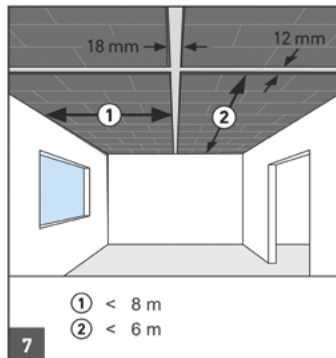
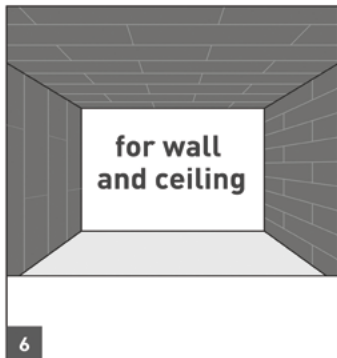
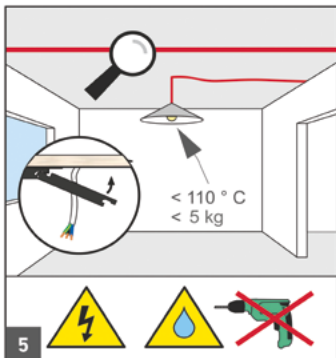
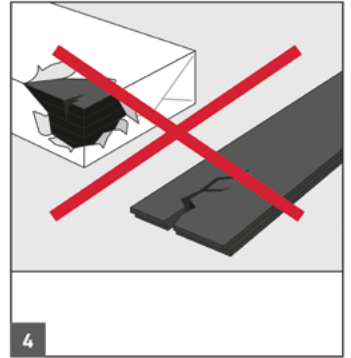
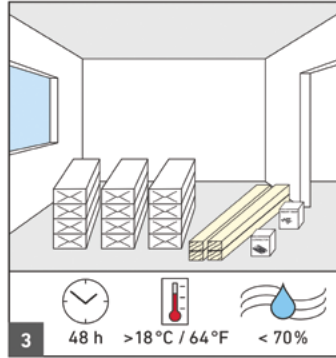
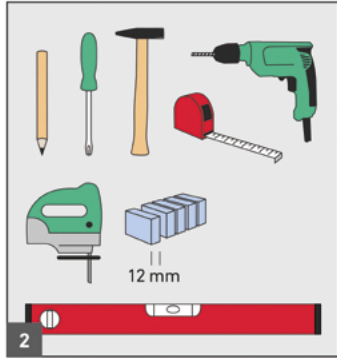
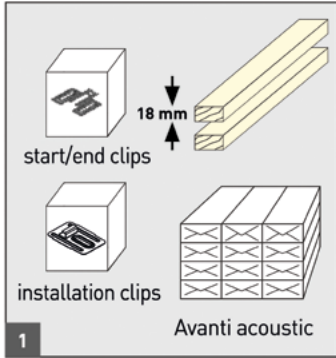


max. 70°C  
**48 h**  
min. 18°C

acclimatize  
**min. 48h**

U < 70%  
> 18°C / 64°F

# AVANTI ACOUSTIC INSTALLATION GUIDE



## START

**A:** Screw flat head • Ø 10mm 3.5×25 mm T15  
**B:** Screw Countersunk head • 3.0×10 mm T10  
**C:** Screw Countersunk head • 3.0×16 mm

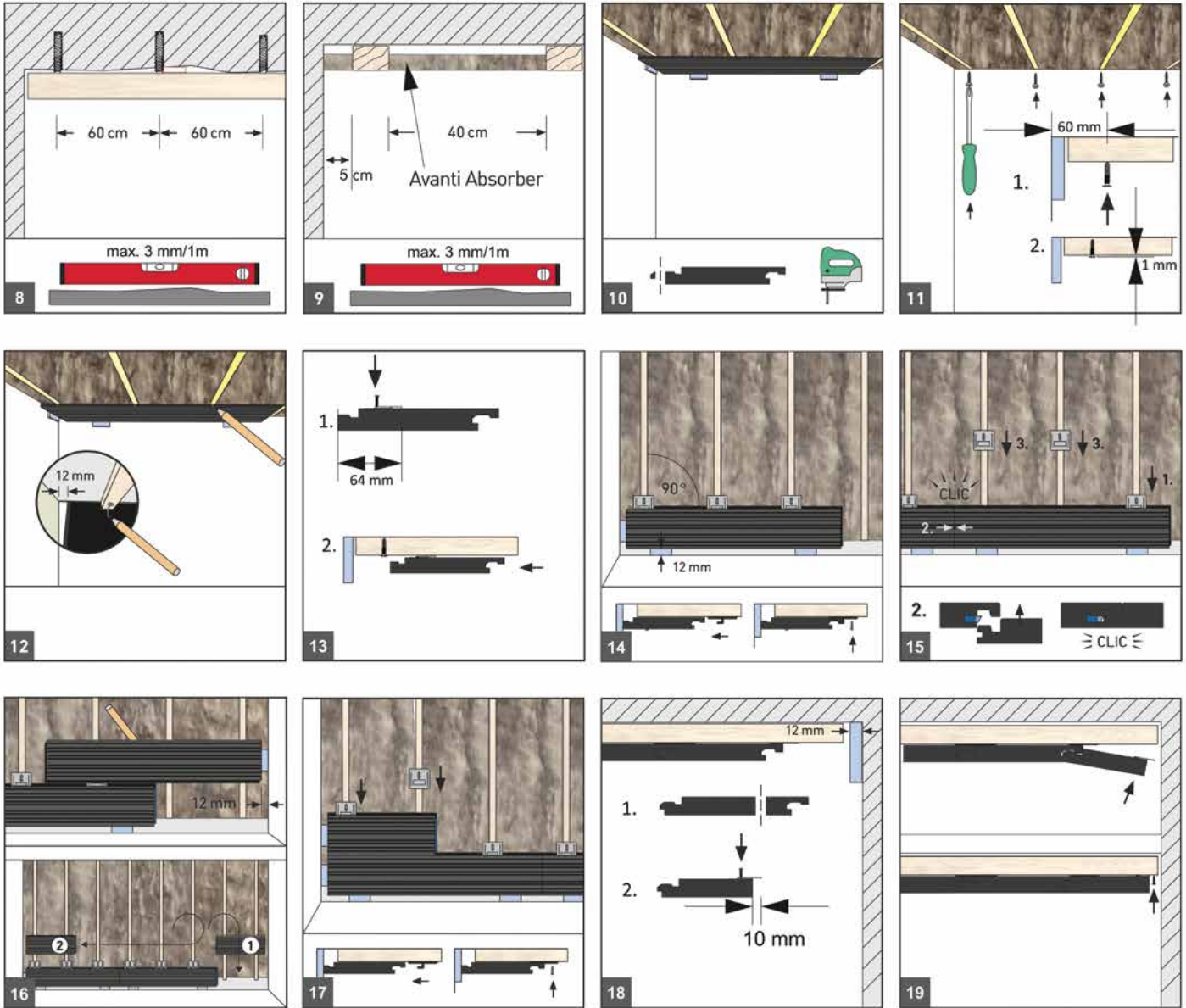
60 mm  
12 mm  
64 mm  
1 mm

1. A  
2. START/END CLIP  
3.  
4. INSTALLATION CLIP  
5. C

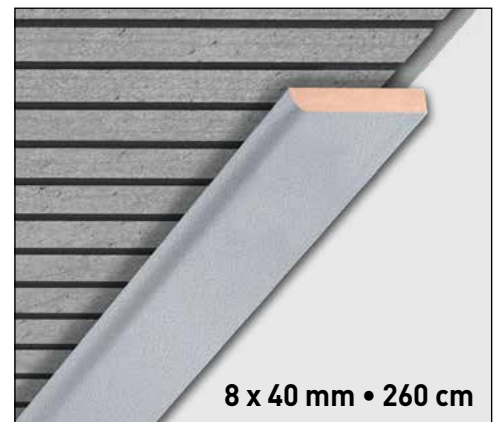
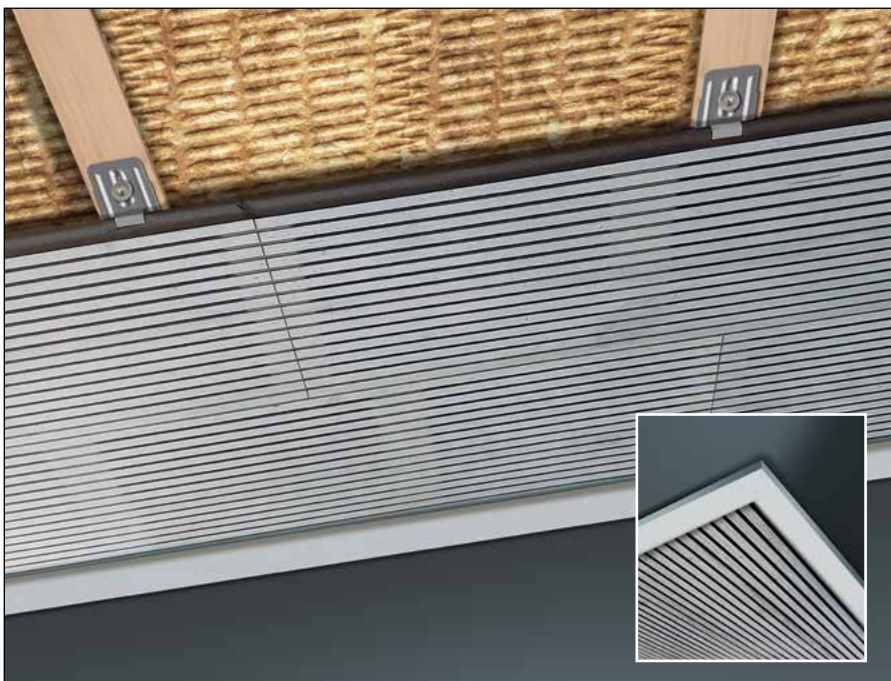
## FINISH

12 mm  
10 mm

1.  
2. START/END CLIP  
B



### Finishing with a cover moulding



**375710**  
Lily White

**375712**  
Silver Pearl

**378517**  
Matt Black



## Installation and finishing with the aluminium base and cover profile



N.V. HDM  
Kiezel Kleine Brogel 57 • 3990 Peer - Belgium  
Tel: 011.61.01.30 • info@hdm.be  
www.hdm.be

