

UK
Installation instructions

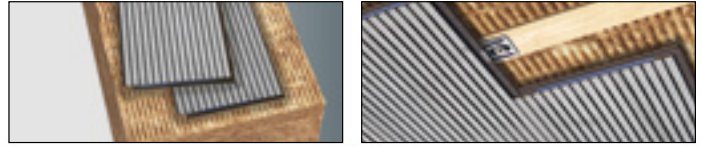
NL
Montage instructies

F
Instructions de montage

D
Montageanleitung

acclimatize
min. 48h
max. 70°C
48 h
min. 18°C
U < 70%
> 18°C / 64°F

AVANTI ACOUSTIC INSTALLATION GUIDE



18 mm
start/end clips
installation clips
Avanti acoustic

12 mm

48 h >18°C / 64°F < 70%

< 110°C
< 5 kg

for wall and ceiling

18 mm 12 mm
① < 8 m
② < 6 m

Start/end clip
Installation clip

START

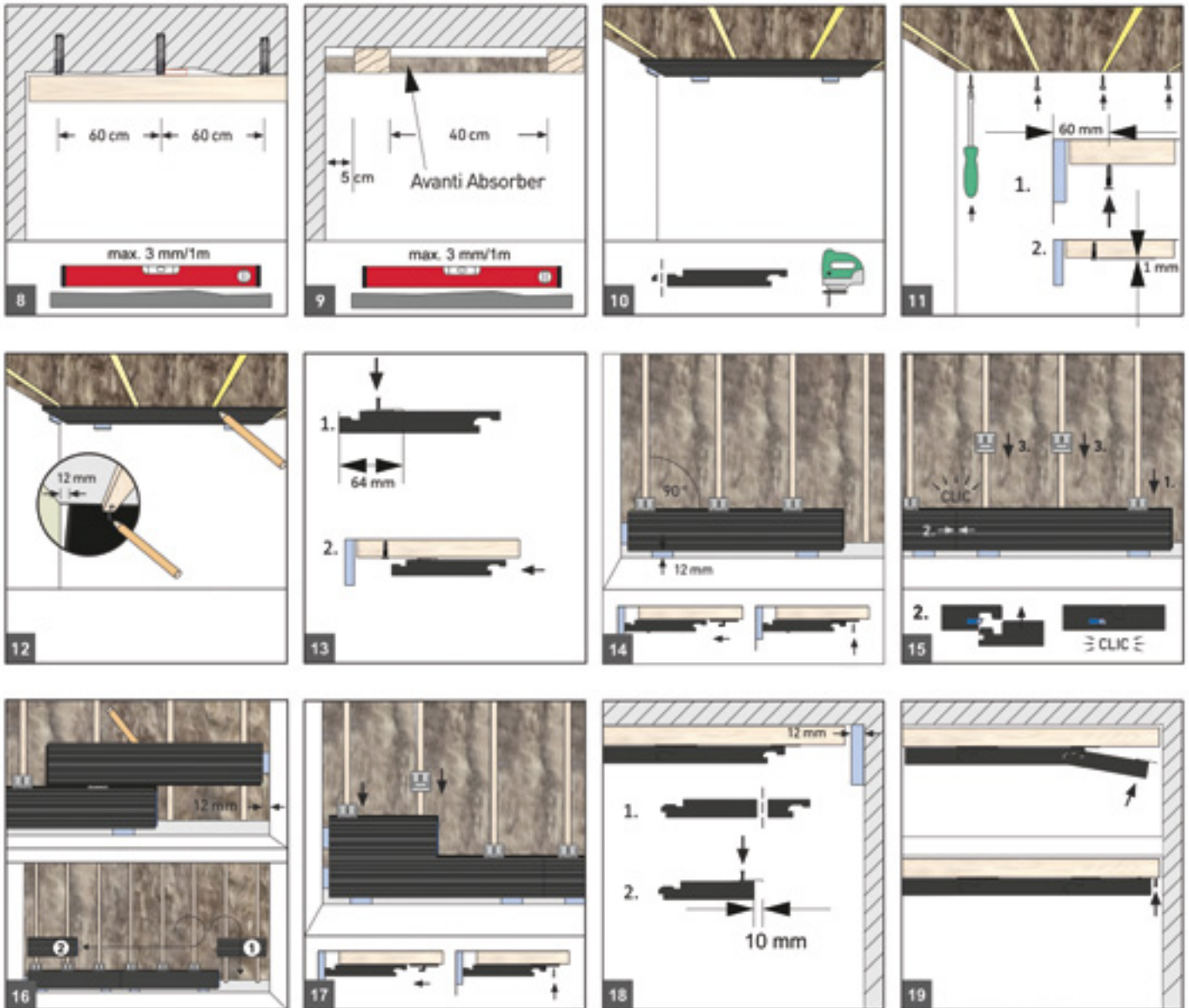
A: Screw flat head · ϕ 10mm 3.5×25 mm T15
B: Screw Countersunk head · 3.0×10 mm T10
C: Screw Countersunk head · 3.0×16 mm

60 mm
12 mm
1. A
2. B
START/END CLIP
64 mm
1 mm
3. A
4. INSTALLATION CLIP
5. C

FINISH

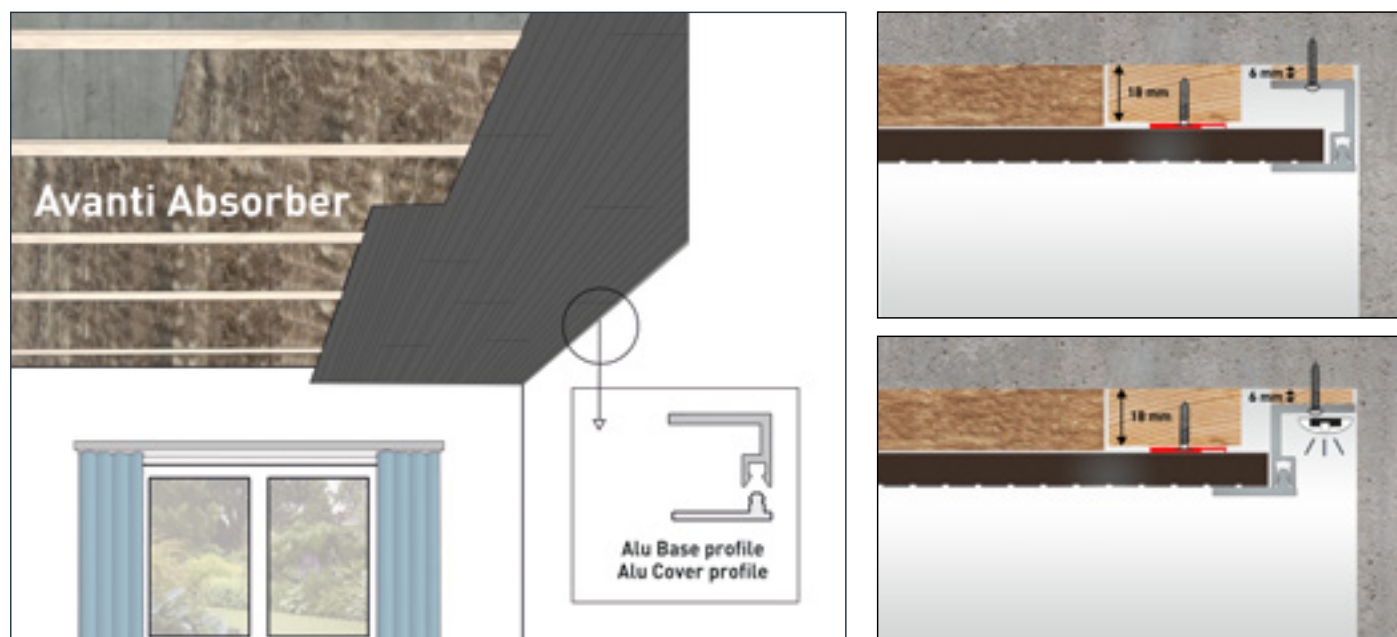
12 mm
10 mm
B

AVANTI ACOUSTIC INSTALLATION GUIDE

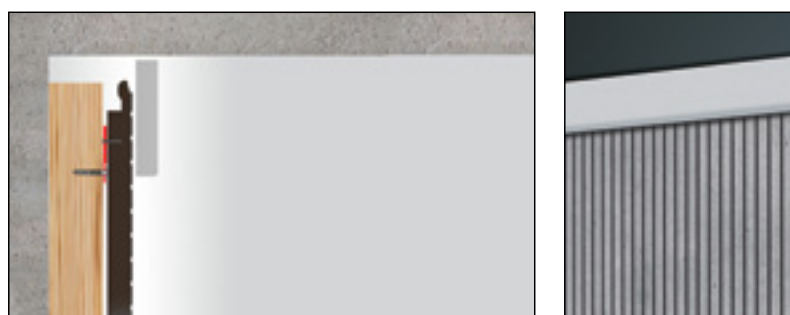


AVANTI ACOUSTIC INSTALLATION GUIDE

Installation and finishing with the aluminium base and cover profile



Finishing with MDF cover profile



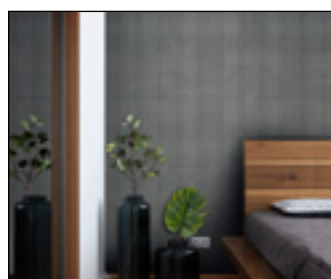
With Avanti absorber: Class B ($\alpha_w = 0.8$)

UK For optimal sound absorption ($\alpha_w = 0.8$): install Avanti Acoustic with the Avanti Absorber and ensure an air gap of 72mm between absorber and the ceiling by installing a counter-slatting.

NL Voor optimale geluiddemping ($\alpha_w = 0.8$): monteer Avanti Acoustic met de Avanti Absorber en zorg voor een luchtruimte van 72 mm tussen de absorber en het plafond door een extra raamwerk te plaatsen.

F Pour une insonorisation optimale ($\alpha_w = 0.8$): montez Avanti Acoustic avec le revêtement Avanti Absorber. Veillez à laisser un espace vide de 72 mm entre le revêtement Absorber et le plafond en plaçant un cadre supplémentaire.

D Für eine optimale Schalldämpfung ($\alpha_w = 0.8$): Montieren Sie Avanti Acoustic mit dem Avanti-Absorber und sorgen Sie für einen Luftabstand von 72 mm zwischen dem Absorber und der Decke, indem Sie einen sogenannte Konterlattung anbringen.



www.hdm.be

N.V. HDM
Kiezels Kleine Broegel 57 · 3990 Peer - Belgium
Tel: 011.61.01.30 · info@hdm.be

