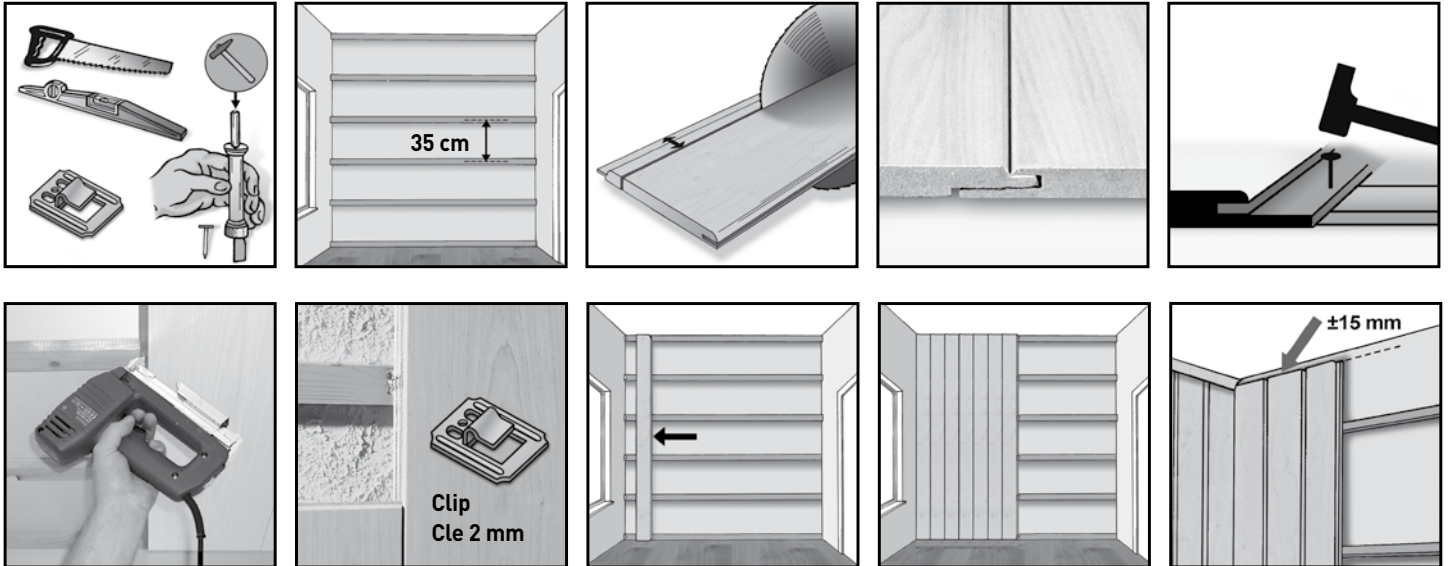


PAN O'QUICK 8mm



Installation of PAN O'QUICK wall and ceiling panels

- HDM Wall and ceiling panels are only suitable for use indoor and should be installed and stored in a room that is, dry, heated and well ventilated.
- These panels may be applied in well-ventilated (with a fan) humid rooms (such as bathrooms). Ensure sufficient supply of fresh air through a slot underneath the door or an air grid. An open window is not sufficient and is not the right ventilation.
- These panels should not be subjected to spraying water or fat (shower, sink, wash basin etc.) and should not be installed in rooms with continuous high humidity such as saunas and swimming pools.
- Suitable for (recessed) LED lighting.
- The panels should not be constantly exposed to high temperatures. This applies when installing behind or above heaters, in a conservatory or behind a window (for example at a skylight).

BEFORE INSTALLATION

- Prior to installation, allow the panels to acclimatise in the appropriate room on a flat surface for at least 48 hours at approx. 17-25°C and 50-60% relative humidity in unopened packaging.
- Check all panels for any visible defects before and during installation. Panels that are damaged or have visible defects must not be installed. Any panels that have been installed will be assumed to have been checked and accepted.

SUPPORTING FRAMEWORK

- The panels are fixed on a supporting framework. The wood strips (approx. 22 x 50 mm) for these should be securely fixed to the wall or ceiling parallel to the direction of the panels at approx. 35 cm intervals for 8mm MDF panels centre to centre with screws (min. 4,5 x 60 mm) and plugs (distance between the screws approx. 50cm).
- Ensure the supporting framework is level. If a wall or ceiling is uneven, it might be necessary to put lining under the wood strips.
- In rooms with problematic climatic conditions (heat/cold) or high humidity (for example newly built homes or attics) so-called counterslating is advisable for better ventilation behind the panels.

INSTALLATION INSTRUCTIONS

- Remember: wood expands! Do not install the panels with the head ends or sides butted too tightly against the wall or ceiling. Leave an expansion gap of at least 10mm around the wall or ceiling. The gap may not be filled with a sealant like silicone or an acrylic sealant.
- If the surface is longer or wider than 8 m, a 20 mm wide expansion gap is required.
- The individual panels are fastened by nails or staples (approx. 20 mm long, nails with a flat head) that are punched through the especially designed MDF tongue. The panels can also be fixed with suitable clips, the right clip is indicated on the front.
- Do not glue the panels!

INSTALLATION OF THE PANELS

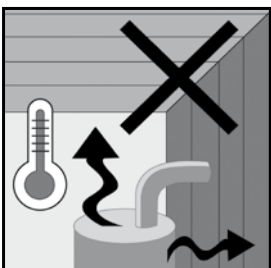
- Fix the first row of the panels exactly parallel to the wall.
- Start installation on the left side of the surface. The groove side of the panel should point at you.
- Saw off the tongue of the first row of panels and screw it on the supporting framework. The distance between the screws should be approx. 15 cm.
- Fasten the panel by nails or staples or push the clips in the groove on the other side of the panel and fix them to the supporting framework with nails (1,6 x 25mm) or screws (3mm (max.) x 25mm with countersunk head).
- Push the tongue of a new panel into the groove of the last panel. Nail, staple or place the clips in the groove at the other side and fix them to the slatted frame. Repeat these steps with each new panel.

FINISH

For a perfect finish cover the expansions gaps with matching skirting and mouldings. For optimal air circulation there should be a gap of approx. 3 mm between the ceiling/wall and the moulding (in damp rooms approx. 5 mm). Fix the mouldings with a suitable glue and follow the instructions of the glue manufacturer.

HDM wall and ceiling panels carry a 10 year guarantee.

Please ask your HDM dealer or check www.hdm.be for the full conditions of warranty.



Do not expose to higher temperatures.



Made in Germany